

Coupler Flange Bolt Sets

Zinc Plated Steel - Standard (Grade 5) and Metric (Grade 8.8) - Complete assembly with bolts, nuts and lock washers

Standard Part No.	Bolt size	Torque Values (ft-lbs)	Package quantity
BOLTSET375	$\frac{3}{8}$ -24 × 1 $\frac{1}{2}$	26	4
BOLTSET437	$\frac{7}{16}$ -20 × 1 $\frac{1}{2}$	41	4
BOLTSET432	$\frac{7}{16}$ -20 × 2 $\frac{3}{4}$	41	4
BOLTSET500	$\frac{1}{2}$ -20 × 2	64	6
BOLTSET625	$\frac{5}{8}$ -18 × 1 $\frac{1}{2}$	128	6
BOLTSET626	$\frac{5}{8}$ -18 × 2	128	6
BOLTSET750	$\frac{3}{4}$ -16 × 2 $\frac{3}{4}$	223	8
BOLTSET875	$\frac{7}{8}$ -14 × 2 $\frac{3}{4}$	355	8
BOLTSET100	1-14 × 3	541	8

Note: All dimensions are in inches and are reference only

Metric Part No.	Bolt size	Torque Values (ft-lbs)	Package quantity
BOLTSET10M	10mm × 40mm	28	4
BOLTSET12M	12mm × 40mm	49	6
BOLTSET16M	16mm × 50mm	121	6
BOLTSET18M	18mm × 70mm	167	10
BOLTSET20M	20mm × 80mm	236	10

Note: All dimensions are in inches and are reference only
Bolt size are in millimeters



Split Coupler Pinch Bolt Sets

Zinc Plated Steel - Standard (Grade 5) - Complete assembly with bolts, nuts and lock washers

Part No.	Bolt size	Torque Values (ft-lbs)
PINCH312	$\frac{5}{16}$ -24 × 1 $\frac{3}{4}$	14
PINCH432	$\frac{7}{16}$ -20 × 2 $\frac{1}{2}$	41
PINCH500	$\frac{1}{2}$ -20 × 3	64

Note: All dimensions are in inches and are reference only

Part No.	Bolt size	Torque Values (ft-lbs)
PINCH625	$\frac{5}{8}$ -18 × 3 $\frac{1}{4}$	128
PINCH751	$\frac{3}{4}$ -16 × 5 $\frac{1}{4}$	223

Note: All dimensions are in inches and are reference only



Setscrews

Zinc Plated Steel - Standard (Grade 5)

Part No.	Bolt size	Torque Values (ft-lbs)
SETSCEW312	$\frac{5}{16}$ -18 × $\frac{3}{4}$	10
SETSCEW313	$\frac{5}{16}$ -18 × 1 $\frac{1}{4}$	10
SETSCEW370 ¹	$\frac{3}{8}$ -16 × 1	17
SETSCEW371	$\frac{3}{8}$ -16 × 1 $\frac{1}{2}$	17

Note: All dimensions are in inches and are reference only
1 Comes with drilled heads



Part No.	Bolt size	Torque Values (ft-lbs)
SETSCEW375 ¹	$\frac{3}{8}$ -16 × 1 $\frac{1}{4}$	17
SETSCEW500	$\frac{1}{2}$ -13 × 1 $\frac{1}{4}$	38
SETSCEW625	$\frac{5}{8}$ -11 × 1 $\frac{1}{2}$	82
SETSCEW750	$\frac{3}{4}$ -10 × 1 $\frac{3}{4}$	111

Note: All dimensions are in inches and are reference only
1 Comes with drilled heads



Transmission Couplers

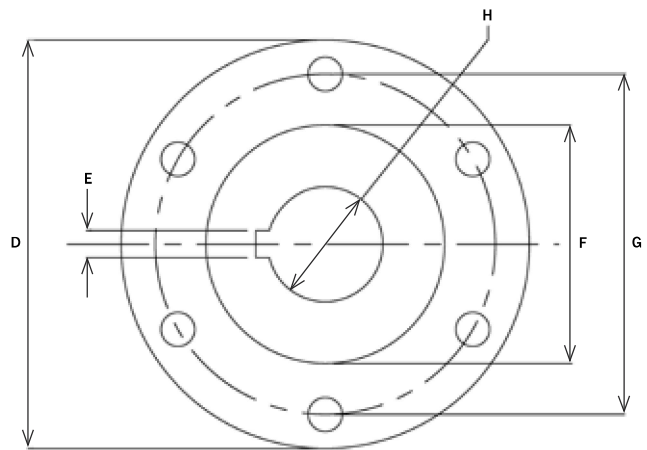
Coupling Reference

Hydrasearch manufactures a full line of transmission couplers for most marine transmissions. Our couplers are cast from ductile iron and machined to SAE J755 specifications. Most of our couplers are machined with our universal bolthole pattern and supplied with mounting hardware. We also offer custom machining for any couplers we do not standardly produce. We carry an extensive inventory in order to better supply our distributor's and OEM's demands.

The following charts can be used to help identify the coupler you need. The first set of charts are categorized by transmission manufacturer (see pages 68-69), while the second set of charts are categorized by flange diameter (see pages 70 - 71). Please feel free to contact our sales team for assistance.

Dimensions

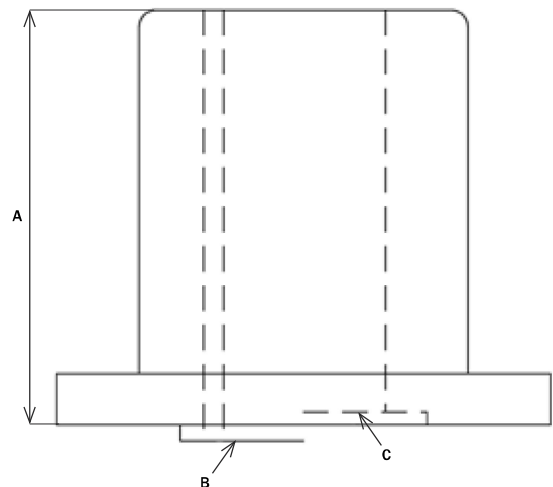
Dimension	Description
A	overall length
B	male pilot (<i>M type</i>)
C	female pilot (<i>F type</i>)
D	flange diameter
E	keyway width
F	pilot diameter
G	bolt circle diameter
H	shaft diameter



Keyway sizes

Shaft diameter	Key size
$\frac{3}{4}$	$\frac{3}{16}$
$\frac{7}{8} - 1 \frac{1}{8}$	$\frac{1}{4}$
$1 \frac{1}{4} - 1 \frac{3}{8}$	$\frac{5}{16}$
$1 \frac{1}{2}$	$\frac{3}{8}$
$1 \frac{3}{4}$	$\frac{7}{16}$
2	$\frac{1}{2}$
$2 \frac{1}{4}$	$\frac{9}{16}$
$2 \frac{1}{2} - 2 \frac{3}{4}$	$\frac{5}{8}$
$3 - 3 \frac{1}{4}$	$\frac{3}{4}$
$3 \frac{1}{2} - 3 \frac{3}{4}$	$\frac{7}{8}$
4	1

Note: All dimensions are in inches and are reference only



Transmission Couplers

Cast ductile with zinc plating

Types of Couplers



solid



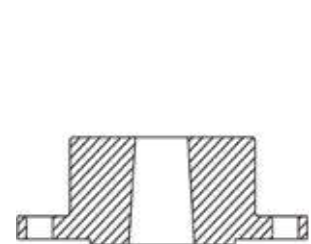
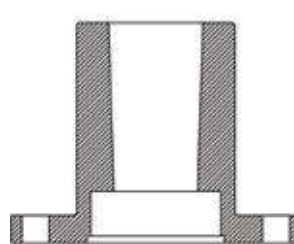
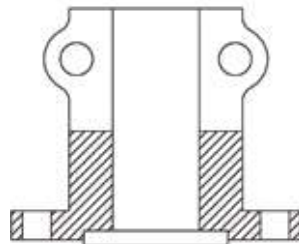
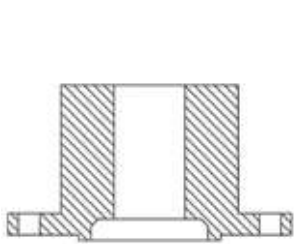
split



standard taper



reverse taper



F

Part number conversion

The part numbers listed on the following pages are only a prefix. The complete part number will need a suffix number as shown below. Example: Prefix 5ØMCØØ5 + shaft size of 1 1/4 (125). The complete number would be 5ØMCØØ5125.

Shaft diameter	Part number suffix	Shaft diameter	Part number suffix
3/4	075	2 1/4	225
7/8	087	2 1/2	250
1	100	2 3/4	275
1 1/8	112	3	300
1 1/4	125	3 1/4	325
1 3/8	137	3 1/2	350
1 1/2	150	3 3/4	375
1 3/4	175	4	400
2	200		

Note: All dimensions are in inches and are reference only

Note: All dimensions are in inches and are reference only

Transmission Couplers

Reference guide sorted by transmission manufacturer

Allison

Solid Part No.	Split Part No.	Taper Part No.	Flange diameter	Shaft range	No. of bolts	Bolt size	Bolt circle	Pilot	Overall length
-	-	50TC575(U)	5 3/4	1 3/4 - 1 1/2	6	1/2	4 3/4	3 x 1/4 F	6 1/2
50MC573(U)	-	-	5 3/4	1 1/2 - 2	6	1/2	4 3/4	3 x 1/4 F	4 1/2
-	50575(U)	-	5 3/4	1 1/4 - 2 1/4	6	1/2	4 3/4	3 x 1/4 F	4 3/16
-	-	50TC725(U)	7 1/4	1 3/4 - 2 1/2	6	5/8	6	3 3/4 x 1/4 F	7 1/4
-	50725A(U)	-	7 1/4	1 1/4 - 1 3/4	6	5/8	6	3 3/4 x 1/4 F	4 3/8
-	50725B(U)	-	7 1/4	2 - 2 1/2	6	5/8	6	3 3/4 x 1/4 F	5 1/8
-	-	50TC900(U)	9	2 - 3	8	3/4	7 1/2	6 x 1/4 F	7 3/4
-	509001(U)	-	9	1 1/2 - 3	8	3/4	7 1/2	6 x 1/4 F	5 1/2

Note: All dimensions are in inches and are reference only

Atomic Four (Universal)

Solid Part No.	Split Part No.	Taper Part No.	Flange diameter	Shaft range	No. of bolts	Bolt size	Bolt circle	Pilot	Overall length
50MC3500	-	-	3.41	7/8 - 1 1/8	3	3/8	2 3/4	1 7/8 x 1/4 F	2.437

Note: All dimensions are in inches and are reference only

Borg Warner

Solid Part No.	Split Part No.	Taper Part No.	Flange diameter	Shaft range	No. of bolts	Bolt size	Bolt circle	Pilot	Overall length
50MC004	-	-	4	3/4 - 1 1/2	4	3/8	3 1/4	2 1/2 x 3/32 M	2 1/4
-	50401S	-	4	3/4 - 1 1/4	4	3/8	3 1/4	2 1/2 x 3/32 M	2
-	50400B	-	4	7/8 - 1 1/2	4	3/8	3 1/4	2 1/2 x 3/32 M	3 7/16
50MC005	-	-	5	1 - 2	4	7/16	4 1/4	2 1/2 x 3/32 M	2 5/8
50MCF004	-	-	4	3/4 - 1 1/2	4	3/8	3 1/4	2 1/2 x 3/16 F	2 9/32
50MCF005	-	-	5	1 - 1 1/2	4	7/16	4 1/4	2 1/2 x 1/4 F	2 5/8
-	50500A	-	5	1 - 1 1/2	4	7/16	4 1/4	2 1/2 x 3/32 M	3 7/16
-	50500C	-	5	1 1/2 - 2	4	7/16	4 1/4	2 1/2 x 3/32 M	4
-	50500S	-	5	1 - 1 1/2	4	7/16	4 1/4	2 1/2 x 3/32 M	2 1/2
-	-	50TC500	5	1 1/4	4	7/16	4 1/4	2 1/2 x 3/32 M	3 7/8
-	-	50TC500	5	1 3/8	4	7/16	4 1/4	2 1/2 x 3/32 M	4 1/4
-	-	50TC500	5	1 1/2 - 1 3/4	4	7/16	4 1/4	2 1/2 x 3/32 M	5
-	-	50TC005 ¹	5	1 1/4 - 1 3/4	4	7/16	4 1/4	2 1/2 x 3/32 M	2 3/4
-	-	50TC575(U)	5 3/4	1 1/2	6	1/2	4 3/4	3 x 1/4 F	5
-	-	50TC575(U)	5 3/4	1 3/4 - 2 1/4	6	1/2	4 3/4	3 x 1/4 F	6 1/2
50MC573(U)	-	-	5 3/4	1 1/2 - 2	6	1/2	4 3/4	3 x 1/4 F	4 1/2
-	50575(U)	-	5 3/4	1 1/4 - 2 1/4	6	1/2	4 3/4	3 x 1/4 F	4 3/16

Note: All dimensions are in inches and are reference only

1 Reverse taper bore

Transmission Couplers

Reference guide sorted by transmission manufacturer

Capitol

Solid Part No.	Split Part No.	Taper Part No.	Flange diameter	Shaft range	No. of bolts	Bolt size	Bolt circle	Pilot	Overall length
-	50475A(U)	-	4 ³ / ₄	1 - 1 ¹ / ₂	6	⁷ / ₁₆	3 ⁷ / ₈	2 ¹ / ₂ × ³ / ₁₆ F	3 ⁷ / ₁₆
-	50475B(U)	-	4 ³ / ₄	1 ¹ / ₂ - 2	6	⁷ / ₁₆	3 ⁷ / ₈	2 ¹ / ₂ × ³ / ₁₆ F	4
50MC4725(U)	-	-	4 ³ / ₄	1 ³ / ₄ - 1 ¹ / ₂	6	⁷ / ₁₆	3 ⁷ / ₈	2 ¹ / ₂ × ³ / ₁₆ F	3 ⁵ / ₈
-	-	50TC475(U)	4 ³ / ₄	1 ³ / ₈ - 1 ³ / ₄	6	⁷ / ₁₆	3 ⁷ / ₈	2 ¹ / ₂ × ³ / ₁₆ F	4 ³ / ₁₆
-	-	50TC575(U)	5 ³ / ₄	1 ³ / ₄ - 2 ¹ / ₄	6	¹ / ₂	4 ³ / ₄	3 × ¹ / ₄ F	6 ¹ / ₂
50MC573(U)	-	-	5 ³ / ₄	1 ¹ / ₂ - 2	6	¹ / ₂	4 ³ / ₄	3 × ¹ / ₄ F	4 ¹ / ₂
-	50575(U)	-	5 ³ / ₄	1 ¹ / ₄ - 2 ¹ / ₄	6	¹ / ₂	4 ³ / ₄	3 × ¹ / ₄ F	4 ³ / ₁₆
-	-	50TC725(U)	7 ¹ / ₄	1 ³ / ₄	6	⁵ / ₈	6	3 ³ / ₄ × ¹ / ₄ F	7 ¹ / ₄
-	-	50TC725(U)	7 ¹ / ₄	2 - 2 ¹ / ₂	6	⁵ / ₈	6	3 ³ / ₄ × ¹ / ₄ F	7 ³ / ₄
-	50725A(U)	-	7 ¹ / ₄	1 ¹ / ₄ - 1 ³ / ₄	6	⁵ / ₈	6	3 ³ / ₄ × ¹ / ₄ F	4 ³ / ₈
-	50725B(U)	-	7 ¹ / ₄	2 - 2 ¹ / ₂	6	⁵ / ₈	6	3 ³ / ₄ × ¹ / ₄ F	5 ¹ / ₈

Note: All dimensions are in inches and are reference only

Hurth

Solid Part No.	Split Part No.	Taper Part No.	Flange diameter	Shaft range	No. of bolts	Bolt size	Bolt circle	Pilot	Overall length
50MC004	-	-	4	³ / ₄ - 1 ¹ / ₂	4	³ / ₈	3 ¹ / ₄	2 ¹ / ₂ × ³ / ₃₂ M	2 ¹ / ₄
-	50401S	-	4	³ / ₄ - 1 ¹ / ₄	4	³ / ₈	3 ¹ / ₄	2 ¹ / ₂ × ³ / ₃₂ M	2
-	50400B	-	4	⁷ / ₈ - 1 ¹ / ₂	4	³ / ₈	3 ¹ / ₄	2 ¹ / ₂ × ³ / ₃₂ M	3 ⁷ / ₁₆
50MC005	-	-	5	1 - 2	4	⁷ / ₁₆	4 ¹ / ₄	2 ¹ / ₂ × ³ / ₃₂ M	2 ⁵ / ₈
-	50500A	-	5	1 - 1 ¹ / ₂	4	⁷ / ₁₆	4 ¹ / ₄	2 ¹ / ₂ × ³ / ₃₂ M	3 ⁷ / ₁₆
-	50500C	-	5	1 ¹ / ₂ - 2	4	⁷ / ₁₆	4 ¹ / ₈	2 ¹ / ₂ × ³ / ₃₂ M	4
-	-	50TC500	5	1 ¹ / ₄	4	⁷ / ₁₆	4 ¹ / ₄	2 ¹ / ₂ × ³ / ₃₂ M	3 ⁷ / ₈
-	-	50TC500	5	1 ³ / ₈	4	⁷ / ₁₆	4 ¹ / ₄	2 ¹ / ₂ × ³ / ₃₂ M	4 ¹ / ₄
-	-	50TC500	5	1 ¹ / ₂ - 1 ³ / ₄	4	⁷ / ₁₆	4 ¹ / ₄	2 ¹ / ₂ × ³ / ₃₂ M	5

Note: All dimensions are in inches and are reference only

Newage

Solid Part No.	Split Part No.	Taper Part No.	Flange diameter	Shaft range	No. of bolts	Bolt size	Bolt circle	Pilot	Overall length
50MC005	-	-	5	1 - 2	4	⁷ / ₁₆	4 ¹ / ₄	2 ¹ / ₂ × ³ / ₃₂ M	2 ⁵ / ₈
-	50500A	-	5	1 - 1 ¹ / ₂	4	⁷ / ₁₆	4 ¹ / ₄	2 ¹ / ₂ × ³ / ₃₂ M	3 ⁷ / ₁₆
-	50500C	-	5	1 ¹ / ₂ - 2	4	⁷ / ₁₆	4 ¹ / ₄	2 ¹ / ₂ × ³ / ₃₂ M	4
-	-	50TC500	5	1 ¹ / ₄	4	⁷ / ₁₆	4 ¹ / ₄	2 ¹ / ₂ × ³ / ₃₂ M	3 ⁷ / ₈
-	-	50TC500	5	1 ³ / ₈	4	⁷ / ₁₆	4 ¹ / ₄	2 ¹ / ₂ × ³ / ₃₂ M	4 ¹ / ₄
-	-	50TC500	5	1 ¹ / ₂ - 1 ³ / ₄	4	⁷ / ₁₆	4 ¹ / ₄	2 ¹ / ₂ × ³ / ₃₂ M	5
-	-	50TC575(U)	5 ³ / ₄	1 ³ / ₄ - 2 ¹ / ₄	6	¹ / ₂	4 ³ / ₄	3 × ¹ / ₄ F	6 ¹ / ₂
50MC573(U)	-	-	5 ³ / ₄	1 ¹ / ₂ - 2	6	¹ / ₂	4 ³ / ₄	3 × ¹ / ₄ F	4 ¹ / ₂
-	50575(U)	-	5 ³ / ₄	1 ¹ / ₄ - 2 ¹ / ₄	6	¹ / ₂	4 ³ / ₄	3 × ¹ / ₄ F	4 ³ / ₁₆
-	-	50TC725(U)	7 ¹ / ₄	1 ³ / ₄ - 2 ¹ / ₂	6	⁵ / ₈	6	3 ³ / ₄ × ¹ / ₄ F	7 ³ / ₄
-	50725A(U)	-	7 ¹ / ₄	1 ¹ / ₄ - 1 ³ / ₄	6	⁵ / ₈	6	3 ³ / ₄ × ¹ / ₄ F	4 ³ / ₈
-	50725B(U)	-	7 ¹ / ₄	2 - 2 ¹ / ₂	6	⁵ / ₈	6	3 ³ / ₄ × ¹ / ₄ F	5 ¹ / ₈

Note: All dimensions are in inches and are reference only

Transmission Couplers

Reference guide sorted by transmission manufacturer

Paragon

Solid Part No.	Split Part No.	Taper Part No.	Flange diameter	Shaft range	No. of bolts	Bolt size	Bolt circle	Pilot	Overall length
-	50400A	-	4	1 - 1 1/2	4	3/8	3 1/4	2 x 3/32 M	3 7/16
-	50400S	-	4	7/8 - 1 1/4	4	3/8	3 1/4	2 x 3/32 M	2
50MC4020	-	-	4	3/4 - 1 3/8	4	3/8	3 1/4	2 x 3/32 M	2 1/4
-	50400C	-	4	1 - 1 1/2	4	3/8	3 1/4	2 5/8 x 3/32 M	3 7/16
-	50402S	-	4	1 - 1 1/4	4	3/8	3 1/4	2 5/8 x 3/32 M	2
50MC4026	-	-	4	3/4 - 1 3/8	4	3/8	3 1/4	2 5/8 x 3/32 M	2 1/4
50MC4526	-	-	4 1/2	1 - 1 3/4	4	3/8	3 3/4	2 5/8 x 3/32 M	2 5/8
-	50500B	-	5	1 - 1 1/2	4	3/8	4 1/8	2 3/4 x 3/32 M	3 7/16
-	50501S	-	5	1 - 1 1/2	4	3/8	4 1/8	2 3/4 x 3/32 M	2 1/2

Note: All dimensions are in inches and are reference only

F

Twin Disc

Solid Part No.	Split Part No.	Taper Part No.	Flange diameter	Shaft range	No. of bolts	Bolt size	Bolt circle	Pilot	Overall length
-	50475A(U)	-	4 3/4	1 - 1 1/2	6	7/16	3 7/8	2 1/2 x 3/16 F	3 1/2
-	50475B(U)	-	4 3/4	1 1/2 - 2	6	7/16	3 7/8	2 1/2 x 3/16 F	4
50MC4725(U)	-	-	4 3/4	1 1/4 - 1 1/2	6	7/16	3 7/8	2 1/2 x 3/16 F	3 5/8
-	-	50TC475(U)	4 3/4	1 3/8 - 1 3/4	6	7/16	3 7/8	2 1/2 x 3/16 F	4 3/16
-	50501A	-	5	1 - 1 1/2	8	3/8	4 1/8	2 1/2 x 3/32 M	3 7/16
-	50575(U)	-	5 3/4	1 1/4 - 2 1/4	6	5/8	4 3/4	3 x 1/4 F	4 3/16
50MC573(U)	-	-	5 3/4	1 1/2 - 2	6	5/8	4 3/4	3 x 1/4 F	4 1/2
-	-	50TC575(U)	5 3/4	1 1/2	6	5/8	4 3/4	3 x 1/4 F	5
-	-	50TC575(U)	5 3/4	1 3/4 - 2 1/4	6	5/8	4 3/4	3 x 1/4 F	6 1/2
-	50725A(U)	-	7 1/4	1 1/4 - 1 3/4	6	3/4	6	3 3/4 x 1/4 F	4 3/8
-	50725B(U)	-	7 1/4	2 - 3	6	3/4	6	3 3/4 x 1/4 F	5 1/8
-	-	50TC725(U)	7 1/4	1 3/4 - 2 1/2	6	3/4	6	3 3/4 x 1/4 F	7 3/4
-	-	50TC900(U)	9	2 - 3	8	7/8	7 1/2	6 x 1/4 F	7 3/4
-	509001(U)	-	9	1 1/2 - 3	8	7/8	7 1/2	6 x 1/4 F	5 1/2
-	501050	-	10 1/2	2 1/2 - 4	8	1	8 3/4	5 x 1/4 F	6 1/2
-	-	50TC1050	10 1/2	2 1/2 - 4	8	1	8 3/4	5 x 1/4 F	8

Note: All dimensions are in inches and are reference only

Volvo Penta

Solid Part No.	Split Part No.	Taper Part No.	Flange diameter	Shaft range	No. of bolts	Bolt size	Bolt circle	Pilot	Overall length
50MVP400	-	-	3.945	3/4 - 1 1/4	4	10mm	3.142	2.366 x 3/32 F	2 17/32

Note: All dimensions are in inches and are reference only

Transmission Couplers

Reference guide sorted by transmission manufacturer

Yanmar

Solid Part No.	Split Part No.	Taper Part No.	Flange diameter	Shaft range	No. of bolts	Bolt size	Bolt circle	Pilot	Overall length
-	50400YS	-	4	$\frac{3}{4}$ - $1\frac{1}{4}$	4	10mm	3.070	$1.966 \times \frac{5}{32}$ M	2
50MCY004	-	-	4	$\frac{3}{4}$ - $1\frac{3}{8}$	4	10mm	3.070	$1.966 \times \frac{5}{32}$ M	$2\frac{1}{4}$
-	50500YS	-	$4\frac{3}{4}$	$1 - 1\frac{1}{2}$	4	10mm	3.937	$2.556 \times \frac{1}{8}$ M	$3\frac{7}{16}$
50MCY005	-	-	$4\frac{3}{4}$	$1 - 1\frac{3}{4}$	4	10mm	3.937	$2.556 \times \frac{1}{8}$ M	$2\frac{3}{8}$

Note: All dimensions are in inches and are reference only

ZF

Solid Part No.	Split Part No.	Taper Part No.	Flange diameter	Shaft range	No. of bolts	Bolt size	Bolt circle	Pilot	Overall length
-	50475A(U)	-	$4\frac{3}{4}$	$1 - 1\frac{1}{2}$	6	12mm	$3\frac{7}{8}$	$2\frac{1}{2} \times \frac{3}{16}$ F	$3\frac{1}{2}$
-	50475B(U)	-	$4\frac{3}{4}$	$1\frac{1}{2} - 2$	6	12mm	$3\frac{7}{8}$	$2\frac{1}{2} \times \frac{3}{16}$ F	4
50MC4725(U)	-	-	$4\frac{3}{4}$	$1\frac{1}{4} - 1\frac{1}{2}$	6	12mm	$3\frac{7}{8}$	$2\frac{1}{2} \times \frac{3}{16}$ F	$3\frac{5}{8}$
-	-	50TC475(U)	$4\frac{3}{4}$	$1\frac{3}{8} - 1\frac{3}{4}$	6	12mm	$3\frac{7}{8}$	$2\frac{1}{2} \times \frac{3}{16}$ F	$4\frac{3}{16}$
50MC573(U)	-	-	$5\frac{3}{4}$	$1\frac{1}{2} - 2$	6	16mm	$4\frac{3}{4}$	$3 \times \frac{1}{4}$ F	$4\frac{1}{2}$
-	50575(U)	-	$5\frac{3}{4}$	$1\frac{1}{4} - 2\frac{1}{4}$	6	$\frac{5}{8}$	$4\frac{3}{4}$	$3 \times \frac{1}{4}$ F	$4\frac{3}{16}$
-	-	50TC575(U)	$5\frac{3}{4}$	$1\frac{1}{2}$	6	$\frac{5}{8}$	$4\frac{3}{4}$	$3 \times \frac{1}{4}$ F	5
-	-	50TC575(U)	$5\frac{3}{4}$	$1\frac{3}{4} - 2\frac{1}{4}$	6	$\frac{5}{8}$	$4\frac{3}{4}$	$3 \times \frac{1}{4}$ F	$6\frac{1}{2}$
-	50610B	-	6.10	$1\frac{3}{4} - 2\frac{1}{2}$	10	$\frac{5}{8}$	4.921	3.94×0.215 F	5
-	-	50TC610	6.10	$2 - 2\frac{1}{4}$	10	$\frac{5}{8}$	4.921	3.94×0.215 F	$6\frac{1}{2}$
-	50669	-	6.69	$1\frac{3}{4} - 2\frac{1}{2}$	12	$\frac{5}{8}$	5.512	$4.530 \times \frac{9}{32}$ F	5
-	-	50TC669	6.69	2	12	16mm	5.512	$4.530 \times \frac{9}{32}$ F	$6\frac{1}{2}$
-	-	50TC669	6.69	$2\frac{1}{4} - 3$	12	16mm	5.512	$4.530 \times \frac{9}{32}$ F	$7\frac{1}{2}$
-	-	50TC725G	7.250	$2 - 2\frac{1}{4}$	12	18mm	6.122	$4.725 \times \frac{9}{32}$ F	$6\frac{1}{2}$
-	-	50TC725G	7.250	$2\frac{1}{2} - 3$	12	18mm	6.122	$4.725 \times \frac{9}{32}$ F	$7\frac{1}{2}$
-	50725BZF	-	$7\frac{1}{4}$	$2 - 2\frac{1}{2}$	8	16mm	6	$3\frac{3}{4} \times \frac{1}{4}$ F	$5\frac{1}{8}$
-	-	50TC72ZF	$7\frac{1}{4}$	$1\frac{3}{4} - 2\frac{1}{2}$	8	16mm	6	$3\frac{3}{4} \times \frac{1}{4}$ F	$7\frac{1}{4}$
-	50787ZF	-	$7\frac{7}{8}$	$1\frac{1}{2} - 2\frac{3}{4}$	8	16mm	6.732	$5.512 \times \frac{9}{32}$ F	$5\frac{1}{2}$
-	50807ZF	-	8.07	$1\frac{1}{2} - 2\frac{3}{4}$	10	18mm	6.693	$5.512 \times \frac{9}{32}$ F	$5\frac{1}{2}$
-	-	50TC807	8.07	$2 - 2\frac{1}{2}$	10	18mm	6.693	$5.512 \times \frac{9}{32}$ F	$7\frac{3}{4}$
-	50886	-	8.86	$2 - 2\frac{1}{2}$	8	16mm	7.717	$5.514 \times \frac{1}{4}$ F	$5\frac{1}{2}$
-	-	50TC886	8.86	2 - 4	8	16mm	7.717	$5.514 \times \frac{1}{4}$ F	$7\frac{3}{4}$
-	501050	-	$10\frac{1}{2}$	$2\frac{1}{2} - 4$	8	1	$8\frac{3}{4}$	$5 \times \frac{1}{4}$ F	$6\frac{1}{2}$
-	-	50TC1050	$10\frac{1}{2}$	$2\frac{1}{4} - 4$	8	1	$8\frac{3}{4}$	$5 \times \frac{1}{4}$ F	8

Note: All dimensions are in inches and are reference only

Miscellaneous

Solid Part No.	Split Part No.	Taper Part No.	Flange diameter	Shaft range	No. of bolts	Bolt size	Bolt circle	Pilot	Overall length
-	50400D	-	4	$1\frac{1}{2}$	8	$\frac{3}{8}$	$3\frac{1}{4}$	$2 \times \frac{3}{16}$ F	$3\frac{3}{8}$

Note: All dimensions are in inches and are reference only

Transmission Couplers

Reference guide sorted by flange diameter

Transmission Guide

Flange diameter	Transmission	Model No.	Pilot M/F	No. of bolts	Bolt size	Bolt circle	Solid Part No.	Split Part No.	Taper Part No.
3.410	Universal	Atomic 4	1.876 F	3	3/8	2 3/4	50MC3500	-	-
3.945	Volvo Penta	MB10A, MD38, MD7A, MD11C	2.362 F	4	3/8	3.149	50MVP400	-	-
4	Hurth	HBW5, 10, 20, 50, 100, 125, 125H, 150, 150A, 150V, 220, 250, HSW450D, 250H, 250A	2 1/2 M	4	3/8	3 1/4	50MC004	50401S 50400B	-
4	Borg Warner	70C, 1017, 1023, 2301	2 1/2 M	4	3/8	3 1/4	50MC004	50401S 50400B	-
4	Newage	PRM DELTA	2 1/2 M	4	3/8	3 1/4	50MC004	50401S 50400B	-
4	Paragon	HF, HB, RD	2 M	4	3/8	3 1/4	50MC4020	50400S 50400A	-
4	Paragon	P-200, P-300, P-13, PV-300	2 5/8 M	4	3/8	3 1/4	50MC4026	-	-
4	ZF	ZF5M, 10M, 12M, 12, 15M, 15MA, 15MIV, 25M, 25MA, 30M, 45C, 25, 25A, 45IV	2 1/2 M	4	3/8	3 1/4	50MC004	50401S 50400B	-
4 1/2	Paragon	RA, PV400	2 5/8 M	4	3/8	3 3/4	50MC4526	-	-
4 3/4	Capitol	5HD200	2 1/2 M	6	7/16	3 7/8	50MC4725(U)	50475A(U) 50475B(U)	50TC475(U)
4 3/4	Twin Disc	MG-502, 502-1	2 1/2 M	6	7/16	3 7/8	50MC4725(U)	50475A(U) 50475B(U)	50TC475(U)
4 3/4	Yanmar	30M30H/G, KVH20, KHIS	2.556 M	4	10mm	3.937	50MCO05	50500YS	-
4 3/4	ZF	ZF220A, IRM220A1, IRM220A/V, ZF220V, IRM220V2, IRM225A	2 1/2 F	6	12mm	3 7/8	50MC4725(U)	50475A(U) 50475B(U)	50TC475(U)
5	Borg Warner	72C-1017, 1018, 1004, 1005, 1013, 1014, 2001	2 1/2 M	4	7/16	4 1/4	50MC005	50500A 50500C	50TC500
5	Hurth	HS25A, HS45A, HS63IV, HSW630A, 630H, 630V, 880D, 450A2, 630D, 630A1, 630H1, 630V1, 90ATS, 90TS, 90VTS, 110TS, HBW630, 630A, 400, 450, 600, 630	2 1/2 M	4	7/16	4 1/4	50MC005	50500A 50500C	50TC500
5	Newage	PRM 210/160	2 1/2 M	4	7/16	4 1/4	50MC005	50500A 50500C	50TC500
5	Paragon	P-400	2 3/4 M	4	3/8	4 1/8	50MC5027	50500B 50500D	-
5	Twin Disc	5010A, 5011A	2 1/2 M	8	7/16	4 1/8	-	50501A	-
5	Volvo Penta	MS, MS3, MS4A, MV2	2 1/2 M	4	7/16	4 1/4	50MC005	50500A 50500C	50TC500
5	ZF	ZF88C, 45A, 63A, 63C, 63IV, 90ATS, 90TS, 110TS, IRM41A2, 50A2, 50A2, 50V3, 501, 50A2/K3, 50V2/3LD	2 1/2 M	4	7/16	4 1/4	50MC005	50500A 50500C	50TC500
5 3/4	Allison	-	3 F	6	1/2	4 3/4	50MC573(U)	50575(U)	50TC575(U)
5 3/4	Borg Warner	-	3 F	6	1/2	4 3/4	50MC573(U)	50575(U)	50TC575(U)
5 3/4	Capitol	2H3/4HE-10200, 2HE/4H3-11200, M105, M125	3 F	6	1/2	4 3/4	50MC573(U)	50575(U)	50TC575(U)
5 3/4	Hurth	HSW800A, 800V, 800VI, 110VTS	3 F	6	1/2	4 3/4	50MC573(U)	50575(U)	50TC575(U)
5 3/4	Hurth	HSW800A2, 800A3, 110ATS	3 F	6	5/8	4 3/4	50MC573(U)	50575(U)	50TC575(U)

Note: All dimensions are in inches and are reference only